

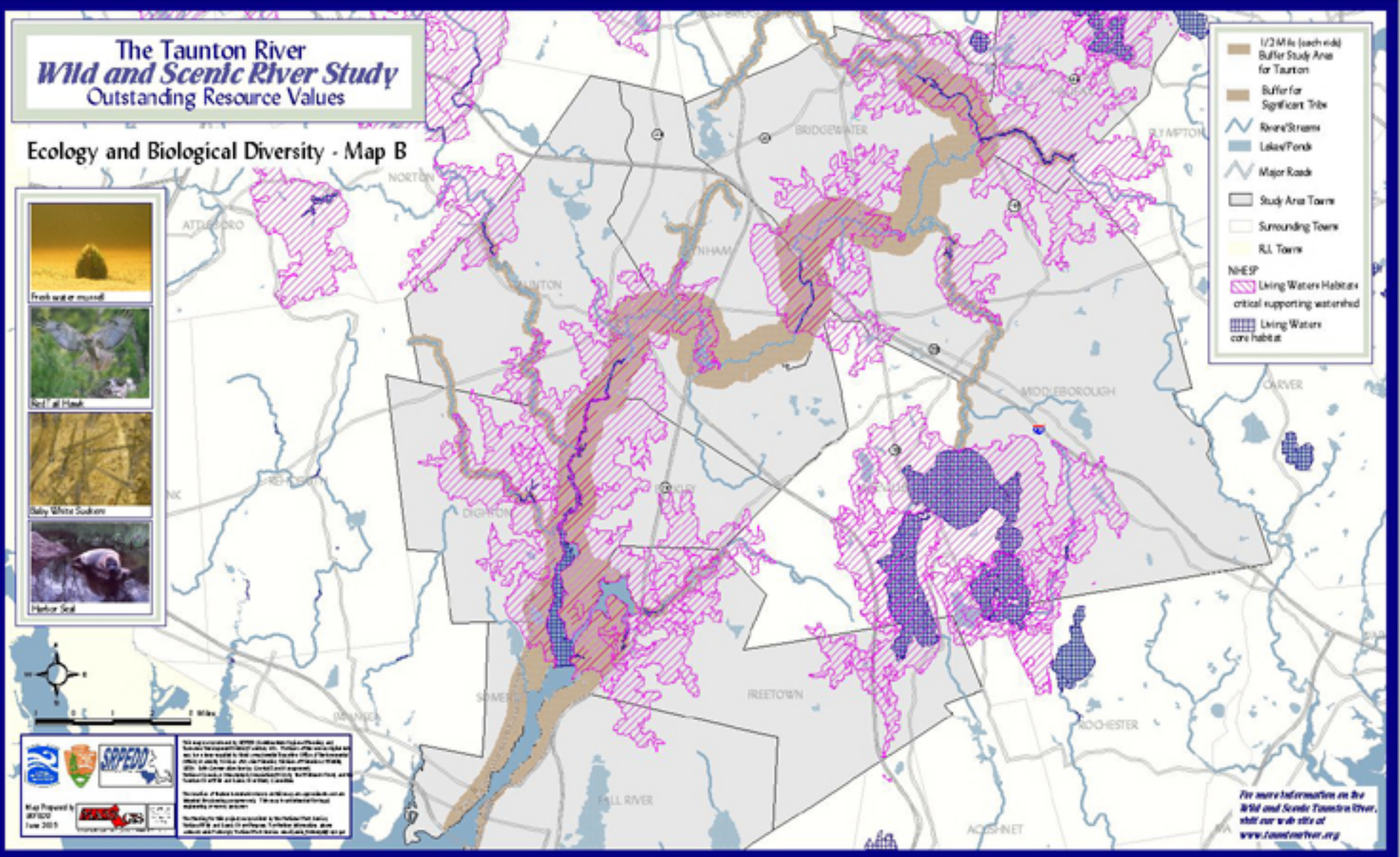
The Taunton River Wild and Scenic River Study Outstanding Resource Values

Ecology and Biological Diversity - Map B



This map was prepared by DVE/2010 for the Taunton River Study. It is based on data provided by the Massachusetts Department of Environmental Protection (MassDEP) and the National Park Service (NPS). The map shows the 1/2 mile buffer study area for the Taunton River and the 1/4 mile buffer for significant tributaries. The map also shows the locations of Outstanding Resource Values (ORVs) for Ecology and Biological Diversity. The map is intended for informational purposes only and should not be used for legal or regulatory purposes. For more information, visit our web site at www.tauntonriver.org.

- 1/2 Mile (each side) Buffer Study Area for Taunton
- Buffer for Significant Tribe
- Rivers/Streams
- Lakes/Ponds
- Major Road
- Study Area Town
- Surrounding Town
- RI Town
- NHESP**
- Living Waters Habitat: critical supporting watershed
- Living Waters core habitat



For more information on the Wild and Scenic Taunton River, visit our web site at www.tauntonriver.org