
IV. GEOGRAPHIC AREA COVERED BY THIS PLAN

Primary Focus Area

The primary focus area covered by this Plan is the mainstem of the Taunton River within the communities of Bridgewater, Halifax, Middleborough, Raynham, Taunton, Berkley, Freetown, Dighton, Somerset, and Fall River. This includes all of the Taunton River and a portion of Mt. Hope Bay. For planning purposes only, the Study Committee focused its mapping and resource investigations within a half-mile wide corridor of the mainstem however, this corridor does not have any particular significance to the Plan or its implementation.

Tributary Focus Areas

Taunton River tributaries within the ten (10) cited communities are also considered essential to the Plan and the achievement of river protection/restoration goals. Eight of these tributaries have been studied by volunteer Stream Teams in some detail as a part of the Taunton W&SR Study; these are the Town, Matfield, Winnetuxet, Nemasket, Forge, Three Mile, Assonet, and Segregansett Rivers. Each of these tributaries within the ten communities is considered a full participant in the Plan, and is eligible for staff assistance, funding and other support as a participant.

In addition, there are many smaller tributaries of the Taunton or the eight listed tributaries that are crucial to the health and well being of the Taunton and its “Outstanding Resource Values.” Projects or initiatives related to these additional tributaries shall also be considered eligible for all benefits/participation in the Plan and the Council.

Taunton River Watershed

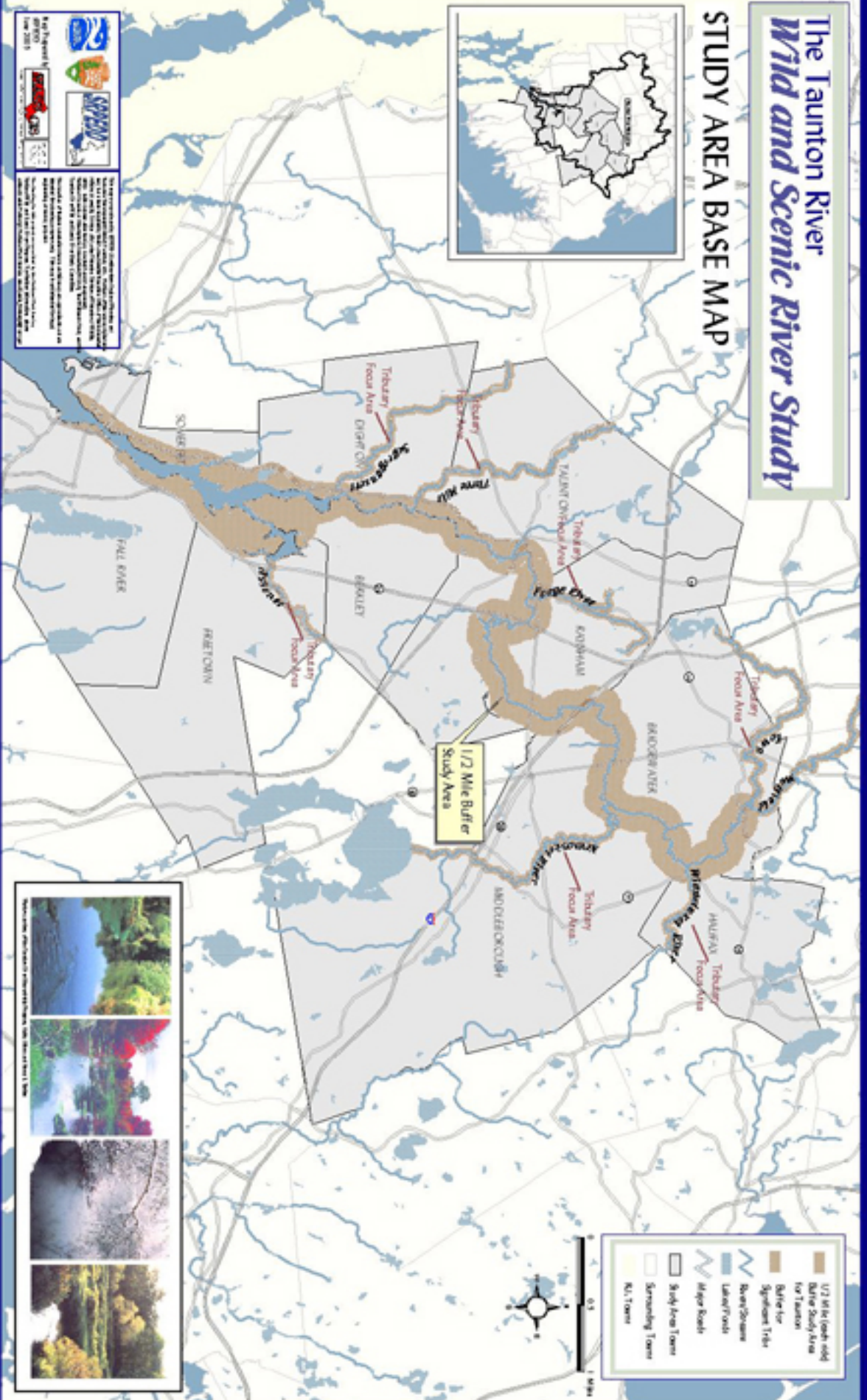
Projects outside of the ten Taunton River communities shall not generally be the focus of the Council and the Plan. However, by formal vote, the Council may choose to devote resources to projects/initiatives within the larger Taunton River Watershed.

Relationship to the Wild and Scenic Designation Area

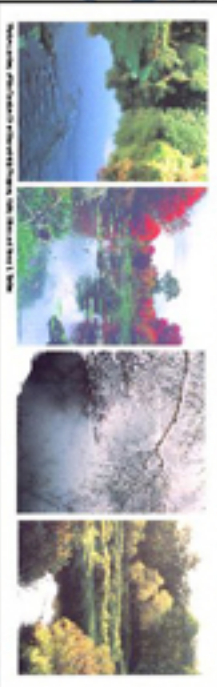
It is recognized that not all of these areas will receive formal designation as a Wild and Scenic River, for example, none of the tributary areas are proposed for designation at this time. However, the scope of the Stewardship Plan shall be considered as stated above, regardless of what segment or segments may eventually receive Wild & Scenic River status.

The Taunton River *Wild and Scenic River Study*

STUDY AREA BASE MAP



- 1/2 Mile Buffer Study Area
- Buffer for Taunton Scenic River
- Stream
- Lake/Pool
- Major Road
- Study Area Town
- Surrounding Town
- No Town



Map Symbols

Map Symbols

Blue wavy line: Stream

Blue shaded area: Lake/Pool

Grey line: Major Road

Grey outline: Study Area Town

Light grey outline: Surrounding Town

Black outline: No Town

Map Symbols

Blue shaded area: Buffer for Taunton Scenic River

Brown shaded area: 1/2 Mile Buffer Study Area

Map Symbols

Blue wavy line: Stream

Blue shaded area: Lake/Pool

Grey line: Major Road

Grey outline: Study Area Town

Light grey outline: Surrounding Town

Black outline: No Town