

**The Taunton River  
Wild and Scenic River Study  
Outstanding Resource Values**

**Fisheries Resources Map A  
Anadromous Fisheries**



Alewives



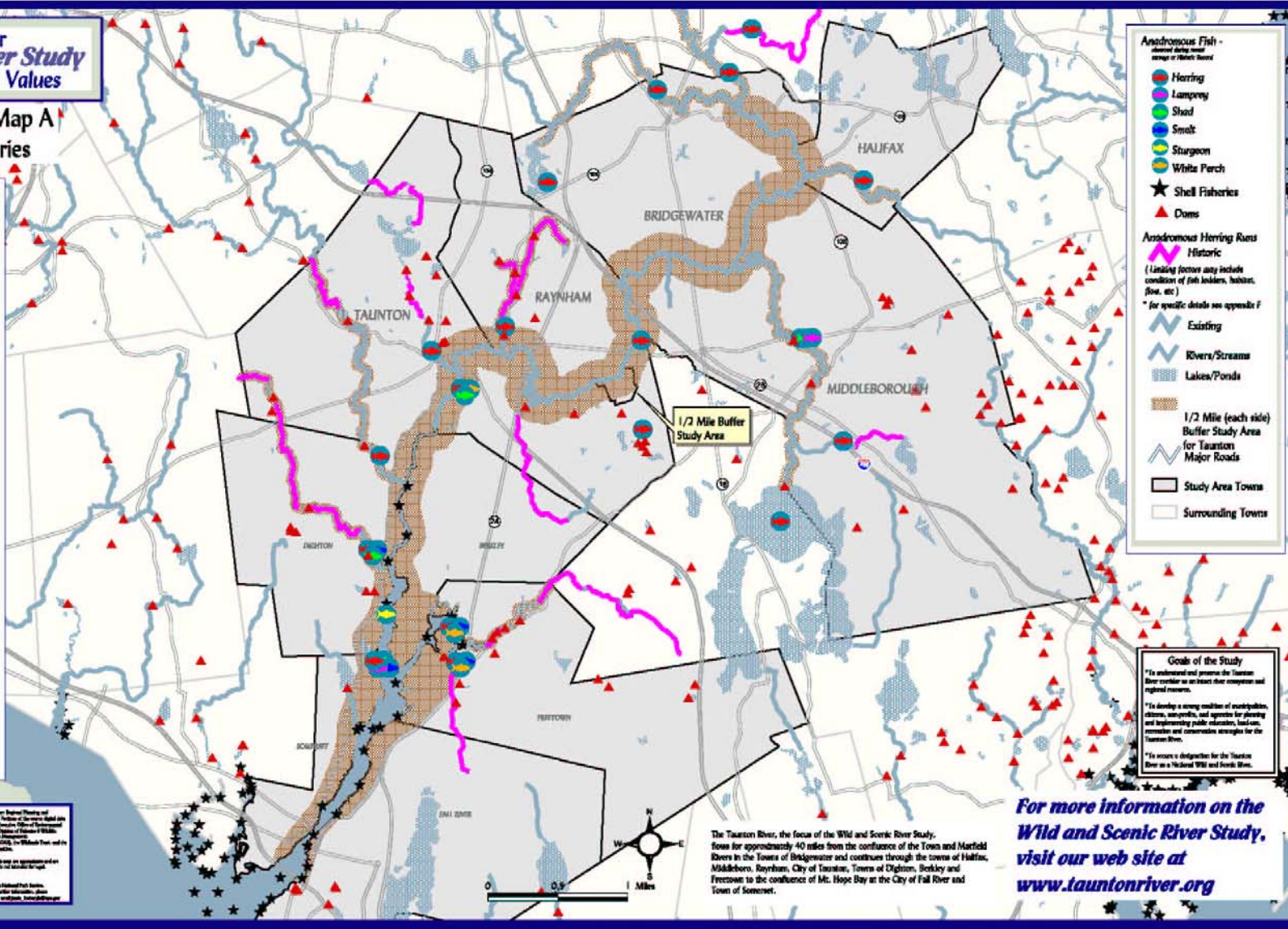
Blue Back Herring



Lampry

The map was produced by SRPED (Statewide River Planning and Evaluation) in cooperation with the Massachusetts Department of Environmental Protection (Mass DEP) and the Massachusetts Department of Transportation (MassDOT). The map is a product of the Taunton River Study, a project of the Massachusetts Department of Environmental Protection (Mass DEP) and the Massachusetts Department of Transportation (MassDOT). The map is a product of the Taunton River Study, a project of the Massachusetts Department of Environmental Protection (Mass DEP) and the Massachusetts Department of Transportation (MassDOT).

Map Prepared by  
SRPED  
July 2004



**Anadromous Fish -  
Legend (Using River  
Average or Hatch Source)**

- Herring
- Lamprey
- Shad
- Smelt
- Sturgeon
- White Perch
- Shell Fisheries
- Dams

**Anadromous Herring Runs  
Historic**  
(Linking factors may include  
condition of fish ladders, habitat,  
flow, etc.)  
\* for specific details see Appendix F

- Existing
- Rivers/Streams
- Lakes/Ponds
- 1/2 Mile (each side)  
Buffer Study Area  
for Taunton  
Major Roads
- Study Area Towns
- Surrounding Towns

**Goals of the Study**

- To understand and promote the Taunton River corridor as an intact river ecosystem and regional resource.
- To develop a strong coalition of municipalities, citizens, non-profits, and agencies for planning and implementing public education, land-use, recreation and conservation strategies for the Taunton River.
- To secure a designation for the Taunton River as a National Wild and Scenic River.

The Taunton River, the focus of the Wild and Scenic River Study, flows for approximately 40 miles from the confluence of the Town and Mattfeld Rivers in the Town of Bridgewater and continues through the towns of Halifax, Middleborough, Raynham, City of Taunton, Towns of Dighton, Rockley and Freestone to the confluence of Mt. Hope Bay at the City of Fall River and Town of Somerset.

**For more information on the  
Wild and Scenic River Study,  
visit our web site at  
[www.tauntonriver.org](http://www.tauntonriver.org)**