

**The Taunton River
Wild and Scenic River Study
Outstanding Resource Values**

**Fisheries Resources Map B
Rare and Endangered Species**



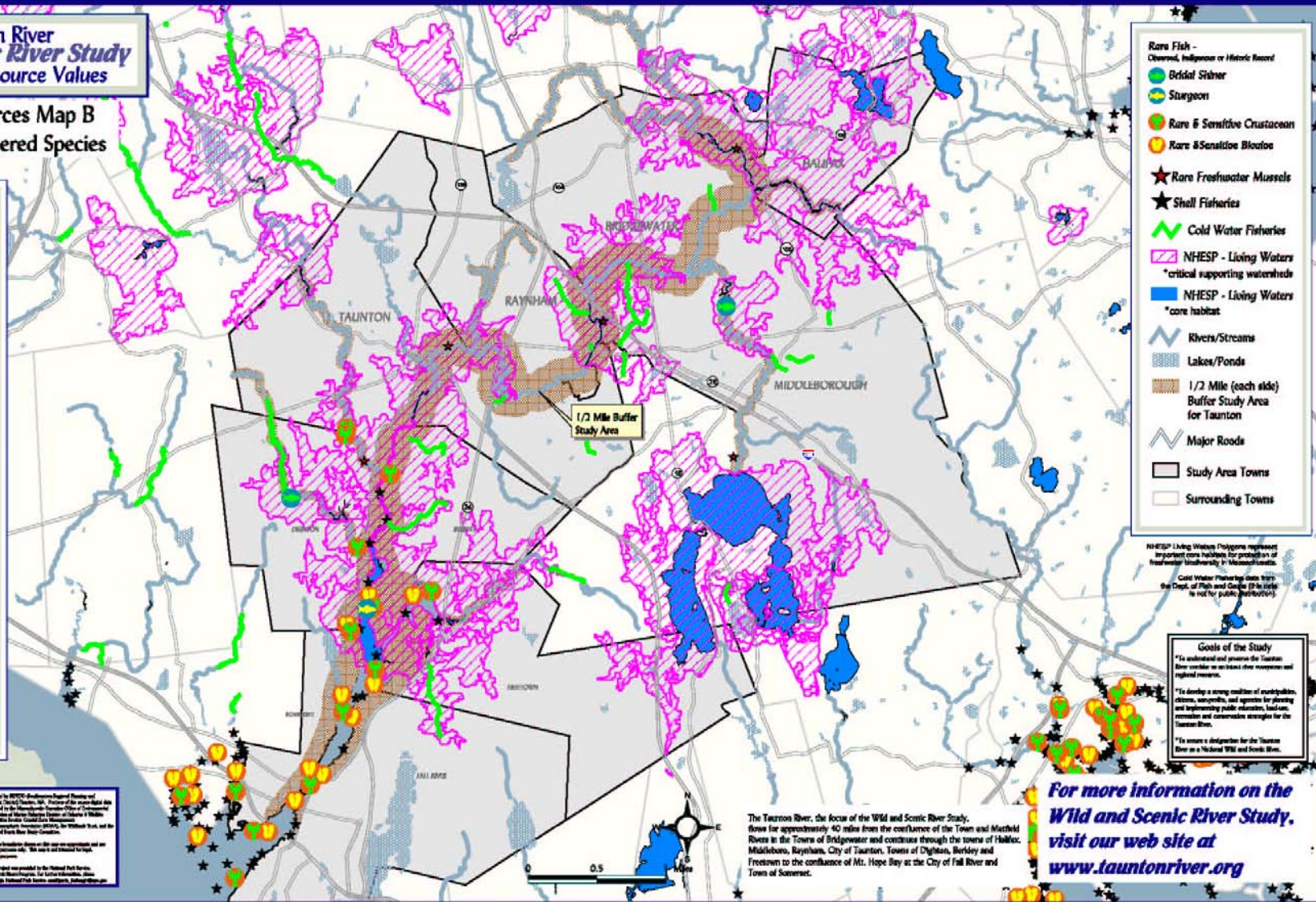
Crayfish



Atlantic Sturgeon



Blue Heron



- Rare Fish -
Orinid Stiner
- Sturgeon
- Rare & Sensitive Crustacean
- Rare & Sensitive Blotow
- Rare Freshwater Mussels
- Shell Fisheries
- Cold Water Fisheries
- NHESP - Living Waters
*critical supporting watersheds
- NHESP - Living Waters
*core habitat
- Rivers/Streams
- Lakes/Ponds
- 1/2 Mile (each side)
Buffer Study Area
for Taunton
- Major Roads
- Study Area Towns
- Surrounding Towns

NHESP Living Waters Polygons represent important core habitats for protection of freshwater biodiversity in Massachusetts.
Cold Water Fisheries data from the Dept. of Fish and Game (D-F-G) is not for public distribution.

Goals of the Study
*To understand and preserve the Taunton River corridor as an intact river ecosystem and regional resource.
*To develop a strong coalition of municipalities, citizens, scientists, and agencies for planning and implementing public education, land-use, recreation and conservation strategies for the Taunton River.
*To assess a designation for the Taunton River as a National Wild and Scenic River.

The map was prepared by SARPED (Southwest Regional Planning and Economic Development) in Taunton, MA. Portions of the map data were derived from the Massachusetts Department of Environmental Management, the Massachusetts Department of Transportation, the Massachusetts Department of Fish and Game, the Massachusetts Department of Health, the Massachusetts Department of Environmental Management, the Massachusetts Department of Transportation, the Massachusetts Department of Fish and Game, the Massachusetts Department of Health, and the Taunton River Wild and Scenic River Study Committee.

The location of the map is intended to be an approximation and is intended for planning purposes only. The map is not intended for legal, engineering or other purposes.

The funding for this project was provided by the National Park Service, National Wild and Scenic River Program. For further information, please contact: John P. Haggard, National Park Service, 5000 Main Street, Taunton, MA 01960.

Map Prepared by
SARPED
Date: 10/04

The Taunton River, the focus of the Wild and Scenic River Study, flows for approximately 40 miles from the confluence of the Taunton and Middlefield Rivers in the Town of Bridgewater and continues through the towns of Middleborough, Raynham, City of Taunton, Towns of Dighton, Berkeley and Freetown to the confluence of Mt. Hope Bay at the City of Fall River and Town of Somerset.

**For more information on the
Wild and Scenic River Study,
visit our web site at
www.tauntonriver.org**